



JAPAN LEATHER AND LEATHER GOODS INDUSTRIES ASSOCIATION

革いいね、NIPPON



JAPAN LEATHER AND LEATHER GOODS INDUSTRIES ASSOCIATION

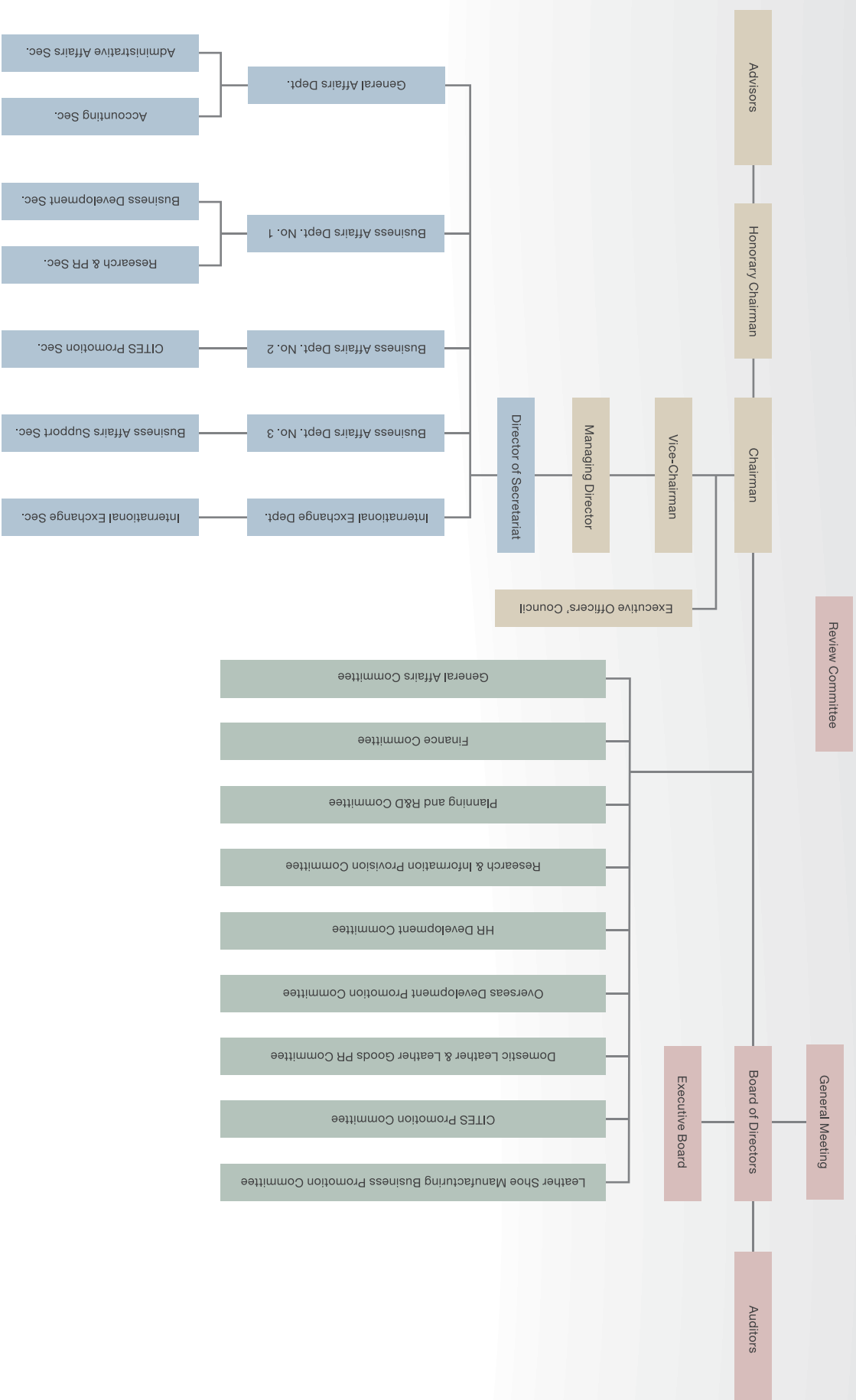
JLIA is a comprehensive organization founded in 1986 for the purpose of working towards the overall promotion and development of and solidarity reinforcement for leather industries while simultaneously contributing to the development of Japanese industries and the advancement of the livelihood culture of the Japanese people.

The organization carries out these objectives through conducting the likes of total coordination of various policies, the development of technology, and promulgation and enlightenment activities as they pertain to the production, distribution and trade of leather and leather goods.

Currently, 27 leather-affiliated entities are active members of JLIA.

For the purpose of achieving the above objectives, JLIA engages in the following businesses:

1. Total coordination of various policies, etc. in leather industries
2. R&D pertaining to technology in leather industries
3. Promulgation and enlightenment activities in leather industries
4. Technology promotion, market channel development and human resources development in leather industries
5. Investigative research pertaining to production, distribution, consumption and trade in leather industries
6. Gathering and provision of information pertaining to leather industries
7. Investigative research for the purpose of preventing pollution and improving health and safety in leather industries
8. Promotion of international exchange and overseas expansion in leather industries
9. Breeding and cultivation of animal life forms in leather industries
10. Management improvement support in leather industries
11. Support activities for reinforcing the business foundation of the leather shoe manufacturing industry
12. Structural improvement support in the leather shoe manufacturing industry
13. Cooperative activities for administrative policies pertaining to leather industries
14. Liaison and coordination activities with related institutions
15. Matters other than the above that are necessary in order to achieve the stipulated objectives



Chairman IWASAKI, Kojiro

Vice-Chairman ISHIKAWA, Isao
TATEMATSU, Susumu
FUJIWARA, Hitoshi
TANABE, Tadatsugu
KIDA, Kunio
YOSHIDA, Teruyuki
KOZUTSUMI, Yukio

Managing Director ASAINE, Hideo

Standing Directors SHIMIZU, Hajime
MORIGUCHI, Akira
MORIWAKI, Shigeyuki
OGAKI, Masamichi
YAMANO, Kazuhiro
UEDA, Yoichi
TAKEDA, Kazuyoshi
MATSUMOTO, Tsutomu
SASAKI, Takio
SUDO, Fumio
YODA, Mitsunobu

Directors MIYAMOTO, Munetake
NAKASHIMA, Mikio
YAMAMOTO, Naoto
TOKUNAGA, Kazuo
TOKUNAGA, Kozo
FUKUMOTO, Ikuya
HIRAI, Seiji
OKAMOTO, Kazuhiko
MORITA, Norio
IZUMI, Yoshiko
YAMAMOTO, Masakuni
NAKAGAWA, Kazuharu
YAMAMOTO, Toshikatsu
USUI, Susumu
ISHII, Noboru
KURIHARA, Shigeru
KASAI, Shoji
MURAYASU, Hideo
TAKAHASHI, Yoshiyuki
OSAWA, Shigehito
Nakagawa, Hiroaki
TANAKA, Hirofumi
SHIBA, Yoshihiro
YOKOUCHI, Masami
ISE, Hirotaka
TAKEKAWA, Yuji
IWATA, Tatsushichi
ARAI, Yasuo
TAMAKI, Hideyuki
SUGIMOTO, Mitsunobu
FUKUMOTO, Yoshiaki
KATANO, Kazunori
YOSHIMURA, Akira
TOMOKUNI, Seiji
SUGIMOTO, Yoshihisa
KAMBE, Shumpei
KOINUMA, Kyoko
NISHIKAWA, Haruo
TOMITA, Tsunekazu

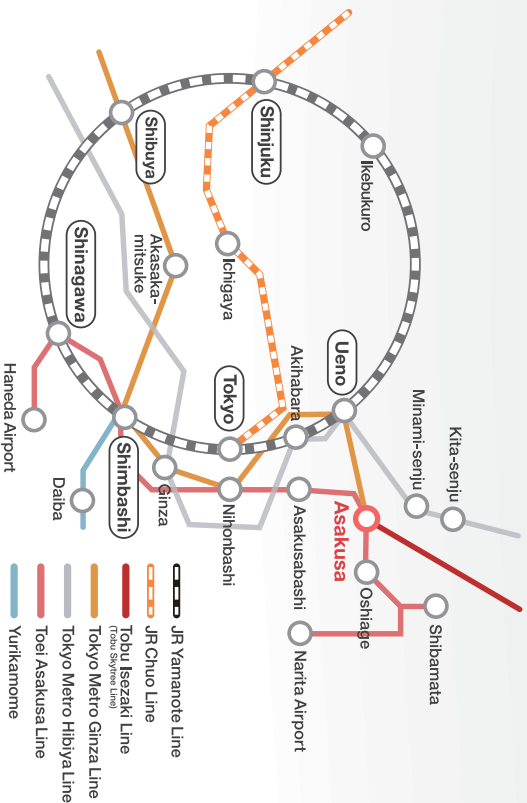
Auditors SASAKI, Kunihiko
KANAZAWA, Moritoshi

Honorary Chairman OSAWA, Shigemi

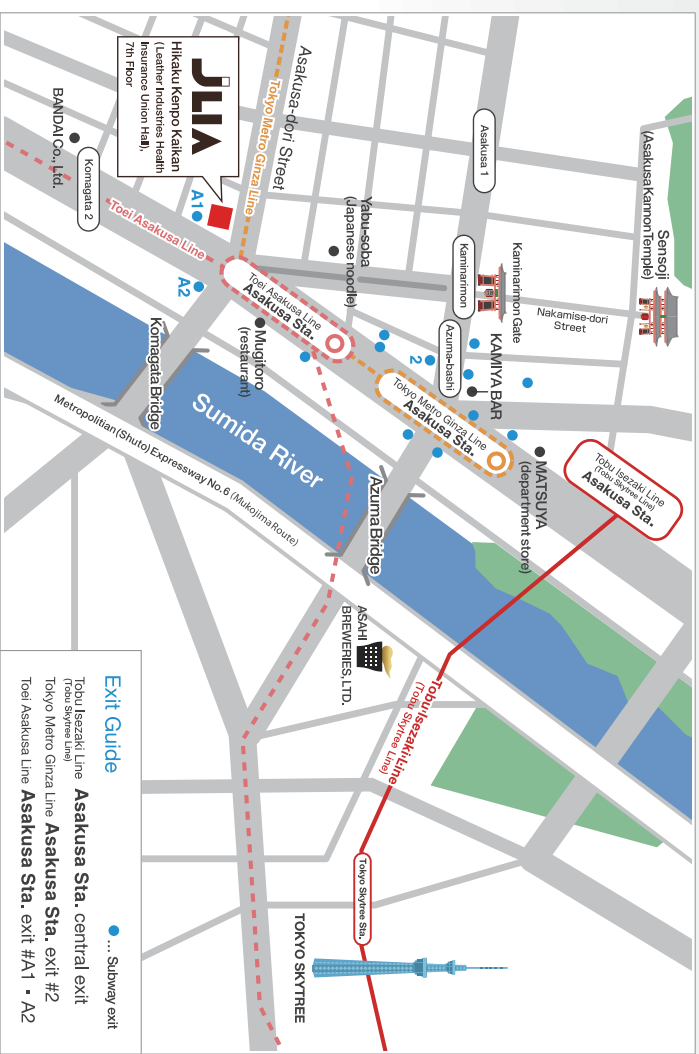
Advisers HONDA, Keiichi
SHIMADA, Yasuhiko
TAKEUCHI, Ken
YASHIRO, Hiro
INOSE, Shoichi
YOSHIDA, Hisao

Material	Japan Livestock By-product Association (JLBA) 2-1-3 Iwamoto-cho, Chiyoda-ku, Tokyo	〒101-0032	http://www.jlba.or.jp/ tel. +81 3 5846 9713 fax. +81 3 5846 9710
Tanning	Tanners' Council of Japan (TCJ) 129 Toyosawa-cho, Himeji-shi, Hyogo	〒670-0964	http://www.tcj.jibasan.or.jp/ tel. +81 79 282 6701 fax. +81 79 282 6703
	Hyogo Tanners' Association 129 Toyosawa-cho, Himeji-shi, Hyogo	〒670-0964	http://www.hyohiren.or.jp/ tel. +81 79 285 3872 fax. +81 79 285 3268
Leather	Japan Leather Traders Association (JLTA) 6-20-6 Asakusa, Taito-ku, Tokyo	〒111-0032	http://www.nikkaku.or.jp/ tel. +81 3 5808 0355 fax. +81 3 3874 5003
	Japan Reptile Leather Industries Association 7-3-6 Asakusa, Taito-ku, Tokyo	〒111-0032	http://www.jra-zenpa.or.jp/ tel. +81 3 5849 4126 fax. +81 3 5849 4127
	Osaka Leather & Material Traders Association 1-5-6 Kitakyuhojimachi, Chuo-ku, Osaka-shi, Osaka	〒541-0057	tel. +81 6 6265 0607 fax. +81 6 6265 0609
Shoes : Manufacturing, Wholesale, and Retail	Japan Shoe Retailer's Federation 1-6-17 Kaji-cho, Chiyoda-ku, Tokyo	〒101-0044	http://kutsu-kouri.jp/ tel. +81 3 3252 5656 fax. +81 3 3252 5657
	Japan Federation of Shoe-Wholesalers' Organizations 1-4-7 Asakusa, Taito-ku, Tokyo	〒111-0032	http://www.shoes.gr.jp/ tel. +81 3 3843 1673 fax. +81 3 3843 1674
	All Japan Leather Shoe Industrial Federation 2-17-1 Higashi Asakusa, Taito-ku, Tokyo	〒111-0025	http://www.zkkr.jp/ tel. +81 3 5603 2135 fax. +81 3 5603 8678
	Japan Shoe Manufacturers Association (JSMA) 3-3-9 Nihonbashi Ningyocho, Chuo-ku, Tokyo	〒103-0013	http://www.jsma.sakura.ne.jp/ tel. +81 3 3661 4672 fax. +81 3 3661 3972
	Japan Chemical Shoes Industrial Association 3-1-13 Ohashi-cho, Nagata-ku, Kobe-shi, Hyogo	〒653-0037	http://www.csia.or.jp/ tel. +81 78 641 2525 fax. +81 78 641 2529
Garment : Manufacturing	All Japan Leather Costume Association (ALCA) 3-17-6 Ryusen, Taito-ku, Tokyo	〒110-0012	tel. +81 3 3873 7650 fax. +81 3 3873 1155
Belt : Manufacturing	Japanese clothes belt Industry Association 4-49-8 Asakusa, Taito-ku, Tokyo	〒111-0032	http://www.belt.or.jp/ tel. +81 3 3874 4792 fax. +81 3 3874 3670
	Tokyo Yoso-zakka Industry Association (TLB) 1-11-12 Kojima, Taito-ku, Tokyo	〒111-0056	http://fc14870320182002.web4.blks.jp/ tel. +81 3 3851 3685 fax. +81 3 3863 4606
Handbag : Manufacturing and Wholesale	Japan Handbag Wholesaler Association 2-16-14 Yanagibashi, Taito-ku, Tokyo	〒111-0052	tel. +81 3 3851 5278 fax. +81 3 3851 7725
	Japan Handbag Manufacturer Association 2-16-14 Yanagibashi, Taito-ku, Tokyo	〒111-0052	http://www.fukuromono.net/ tel. +81 3 3851 5278 fax. +81 3 3851 7725
	Japan Handbag Association (JHA) 2-16-14 Yanagibashi, Taito-ku, Tokyo	〒111-0052	https://www.handbag.or.jp/ tel. +81 3 3851 5278 fax. +81 3 3851 7725
Luggage : Manufacturing and Wholesale	Japan Luggage Association 4-16-3 Kuramae, Taito-ku, Tokyo	〒111-0051	http://www.kaban.or.jp/ tel. +81 3 3862 3516 fax. +81 3 3862 3520
	Tokyo Luggage Association 4-16-3 Kuramae, Taito-ku, Tokyo	〒111-0051	http://www.tokyokaban.or.jp/ tel. +81 3 3862 3511 fax. +81 3 3862 3520
	Japan Bag Manufacturers Association 4-16-3 Kuramae, Taito-ku, Tokyo	〒111-0051	tel. +81 3 3862 3513 fax. +81 3 3862 3520
Luggage & Handbag : Manufacturing and Wholesale	Japan Luggage & Handbag Association 4-16-3 Kuramae, Taito-ku, Tokyo	〒111-0051	http://www.kaban-handbag.com/ tel. +81 3 3862 3511 fax. +81 3 3862 3520
	2-16-14 Yanagibashi, Taito-ku, Tokyo	〒111-0052	tel. +81 3 3851 5278 fax. +81 3 3851 7725
Gloves : Manufacturing	Japan Gloves Industry Association (JAGA) 1810-1 Minato, Higashikagawa-shi, Kagawa	〒769-2701	http://www.tebukurokumiai.jp/ tel. +81 879 25 3208 fax. +81 879 24 0838
Others	Gelatin Manufacturers Association of Japan (GMJ) 2-8-12 Nihonbashi Honcho, Chuo-ku, Tokyo	〒103-0023	http://www.gmj.or.jp/ tel. +81 3 6667 8251 fax. +81 3 6667 8250
	Foot, Footwear and Health Association (FHA) 7-1-9 Asakusa, Taito-ku, Tokyo	〒111-0032	http://www.fha.gr.jp/ tel. +81 3 3874 7646 fax. +81 3 3875 0880
	Japan Leather Craft Academy 4-16-3 Kuramae, Taito-ku, Tokyo	〒111-0051	http://www.japanleathercraft.jp/ tel. +81 3 3865 7457 fax. +81 3 6905 8161
	Leather Commerce & Industry's Association of Tokyo 7-1-9 Asakusa, Taito-ku, Tokyo	〒111-0032	tel. +81 3 3873 6495 fax. +81 3 3874 2833
	Association of Tokyo Leather Fair (TLF) 6-20-6 Asakusa, Taito-ku, Tokyo	〒111-0032	http://tlf.jp/english tel. +81 3 3873 6564 fax. +81 3 3873-6565

route map



access map



Japan leather and Leather goods Industries Association (JLIA)

1-12-13 Komagata, Taito-ku, Tokyo 〒111-0043
 tel. +81 3 3847 1451 fax. +81 3 3847 1510
<http://www.jlia.or.jp/>

11月03日は“いいしザーの日”

<http://www.jlia.or.jp/>